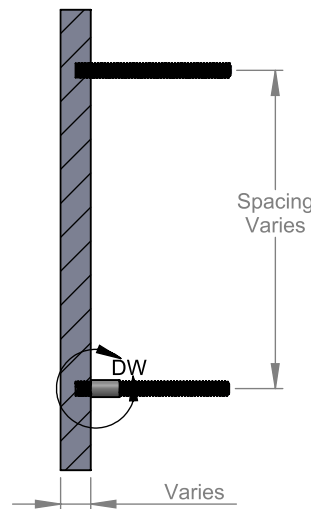
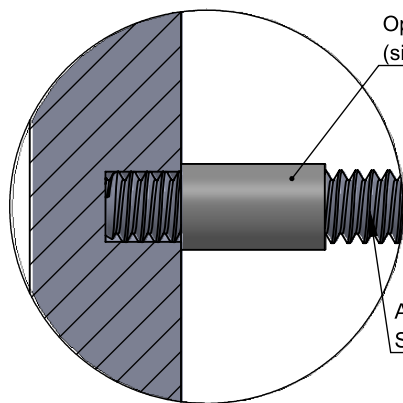


FRONT VIEW II SCALE 1:2.5



SECTION VIEW A-A II SCALE 1:2.5

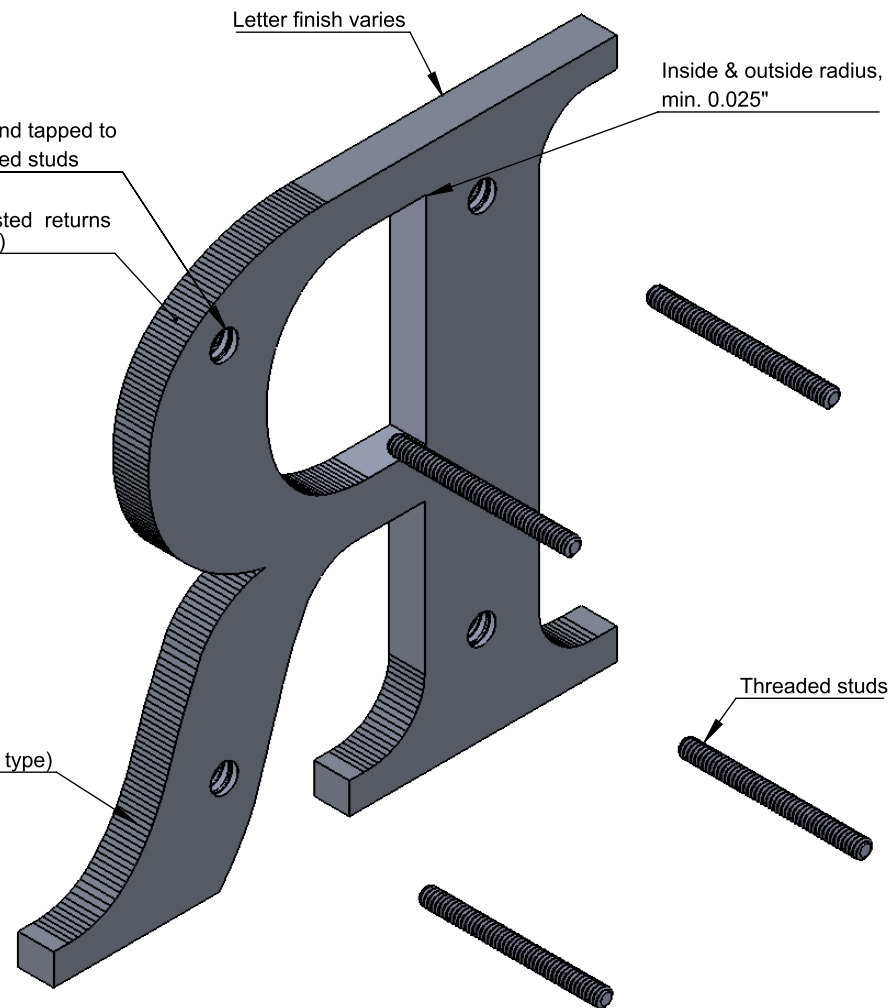


DETAIL DW II SCALE 2:1

Optional spacer sleeve  
(size varies)

1/4" - 1" Thick (based on metal type)

Aluminum studs with aluminum letters  
Stainless steel studs with other metal types



ISOMETRIC BACK VIEW II SCALE 1:1.5

| SIZE          | MIN STUDS/LTR |
|---------------|---------------|
| Up to 3"      | 3 studs       |
| over 3" - 15" | 4 studs       |
| Over 15"      | 6 studs       |
| Punctuation   | 2 studs       |

**NOTES:**

- Typical stud length 2" beyond back of letter
- Letters under 15" high - 10/24 studs, 15"+ high - 1/4-20 studs.
- Less than 3/8" stroke, 6-32 or 4-40 studs
- Minimum 1/4" thick
- Letters or logos, standard or custom

**LETTERS  
AND  
SIGNS.COM**

TITLE:

**FLAT CUT METAL - STUD MOUNT**

MATERIAL:

**METAL**

PRODUCT TYPE:

**FLAT CUT METAL**

DWG NO. FTMT10

REV 10/25/16

SCALE: AS INDICATED

SHEET 1 OF 1