

# SIGN INSTALL GUIDE

## HALO-LIT SIGN LETTERS

Sign installation has never been easier!

This step-by-step guide along with our handy mounting templates makes the process quick and easy.

*(it will save you a bunch of money too!)*



816.800.9444



info@lettersandsigns.com



11447 Strang Line Rd. Lenexa, KS 66215

## What you will need:

- Lighted Sign and/or Letters
- Mounting Template (included)
- Stud Mounts/Threaded Rods (included)
- Metal Spacers (included)
- Power Supply (included)
- Wire Nuts (included)
- Extra wire (included)
- Drill
- Drill Bit (3/16")
- Tape Measure
- Level
- Masking Tape or Painter's Tape
- Clear Silicone

***NOTE: If installing on Stone or Brick use a 3/16" Masonry Drill Bit and Hammer Drill***

# IMPORTANT NOTES (read before installing)

## 1) *Electrical safety & code*

- Halo-lit letters require a power supply/driver (usually low-voltage). If you are tying into building power (120V/230V), use a licensed electrician and follow local code.
- Always turn off power at the breaker before making any electrical connections.

## 2) *Power supply location matters*

- Plan where the power supply will live before you drill: common options are inside the wall, above a drop ceiling, in a nearby cabinet/closet, or in an exterior-rated enclosure.
- Make sure it remains accessible for future service. Drivers can fail over time—don't permanently bury it without access.
- *NOTE: The power supply must be installed within 10ft of the signage location. If you cannot install the power supply within 10ft, then consult your electrician or contact us.*

## 3) *Test illumination before final mounting*

- Always test the letters and power supply on the ground before installing. It's much easier to fix a wiring issue before everything is on the wall.
- Connect the letters to the power supply temporarily (per your wiring diagram / labels) and confirm:
  - All letters light up
  - Brightness is consistent
  - No flicker

**IMPORTANT:** If anything doesn't light, stop here and troubleshoot before mounting. Most issues are a loose connector, reversed polarity (low-voltage DC), or a missed connection.



## STEP 1

### Plan & Prep Sign Location

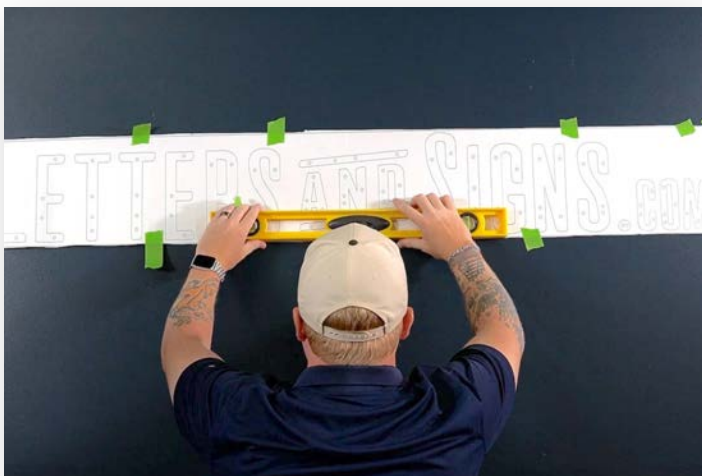
Determine where the sign will go and how it will be centered/aligned. Mark a light centerline or reference point if needed

## STEP 2

### Position Template

Lightly tape the template to the wall using masking or painter's tape. Use the template's center marks/notches (if included) to help align it.

**TIP:** Don't fully tape down the template yet - you may adjust it in the next step



## STEP 3

### Level Template & Apply More Tape

Ensure the template is level on the wall.

Then apply more tape. Ensure the template is taped tight and flat against the wall.

## STEP 4

### Drill Holes (through the template)

Using a drill bit slightly larger than the stud diameter (usually 3/16" bit), drill straight through the paper template at each stud mark and into the wall.



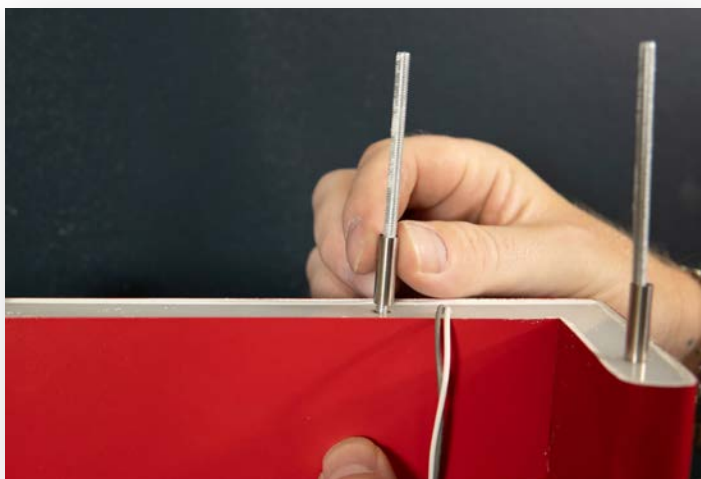
If running through-wall wiring, drill wire pass-through holes as marked. This hole might need to be slightly larger than the holes for the mounting hardware.

#### **IMPORTANT:**

Don't oversize holes—loose anchors can cause letters to sag, which ruins halo consistency.

For Solid Wall (brick, concrete, block, etc): Drilling through the entire wall for mounting hardware is not necessary as long as the mounting hardware can go 2" deep into the wall. Wire holes still need to go through entire wall.

For Drywall or Siding: Hardware should go 2" deep into wall, and usually no additional anchoring is required.



## STEP 5

### Attach Hardware

Hand-Tighten the stud mounts (threaded rods) into the holes on the back of letters. Slide stand-offs over studs.

**IMPORTANT:** Do not overtighten. Just hand-tighten until they feel secure and not wobbly.

## STEP 6

### Test Fit a Few Letters

Carefully remove the template and clean dust from the holes (vac/brush works great).

Then do a quick dry run:  
Place one or two letters onto the wall (no silicone yet) to confirm everything lines up. Adjust any tight holes as needed.



## STEP 7

### Fill Holes with Silicone

Fill each drilled hole partially with silicone (about 1/3 full is usually enough). You want coverage—not a hole overflowing with sealant. This helps lock the studs in place and reduces moisture exposure.

## STEP 8

### Apply Silicone to Studs

Apply a small dab/light coat of silicone to the tips of the studs (or the portion that will sit inside the wall).

**IMPORTANT:** Less is more. Too much silicone can squeeze out around the letter edges.





## STEP 9

### Insert Wires into Wall

Every individual Letter or Logo Element will have a set of wires. For a clean look, each wire will need to go into the wall so it's not visible on the front. Wires must be accessible so connections can be made.

#### Common Wiring Methods & Locations:

- **Behind Wall:** Easiest and most ideal way to wire the signage. Wires go through the entire finished wall and connections are made.
- **Inside Wall and/or Access Panel:** When wires are hidden inside the wall because a "behind wall method" is not possible or desired. Sometimes the wall must be cut open (and re-patched) or wiring must be fished through studs inside the wall to make necessary connections. An optional in-wall Access Panel (sold separately) can also be installed to access wires.
- **Ceiling:** Wires are fished through the wall up into the open ceiling or drop ceiling (ceiling tiles).

**Note:** If you do not have access to wires, check with an electrician or contact us to see if there are other options for installation. Panel Mounted, Raceway Mounted and other Plug & Play options may be more suitable if you do not have access to wiring.

---

## STEP 10

### Mount Letters

Starting with one letter, after feeding the wire through the holes, align the studs with the holes and press the letter straight into place until the spacers sit flush on the wall

Repeat for each letter.





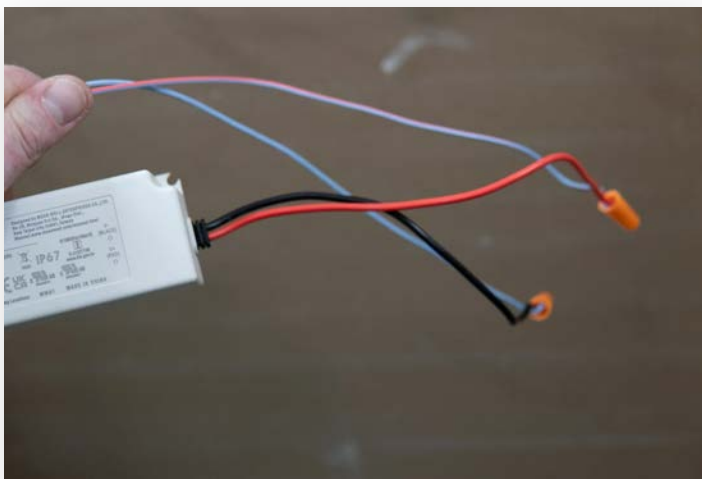
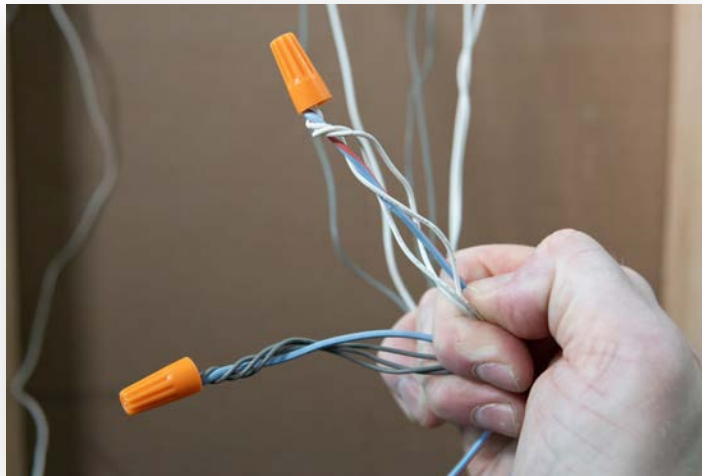
## STEP 11

### Make Connections

Bundle same-colored wires together. Pigtail them to an extra wire that will go to the power supply. You're creating a "trunk" lead from the bundle to the power supply output.

Repeat until all the wires coming from the letters have been connected.

**NOTE:** See *Wiring Diagram on Last Page* for recommended wiring methods



## STEP 12

### Connect Wires to Power Supply

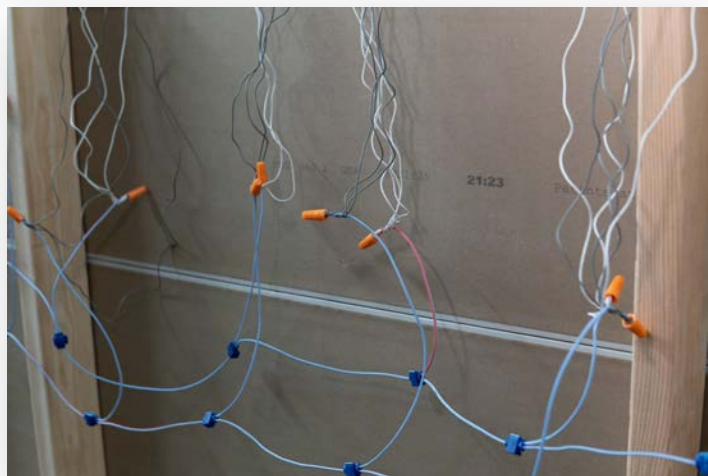
Connect the trunk lead wires to the **OUTPUT DC** side of the power supply.

## STEP 13

### Double Check Connections

Double check connections and ensure polarity (+/-) is correct according to wiring diagram.

Ensure wires from letters are on **OUTPUT** side of power supply.





# STEP 14

## Connect Power Supply (AC SIDE) to Building 120v Power

Only perform this connection once you **CONFIRM POWER IS OFF** or **DE-ENERGIZED**.

Connect the AC side of the Power Supply to your building's 120v power.

**Turn on power and ensure:**

- 1) All letters illuminate
- 2) Halo glow is even
- 3) No flicker
- 4) No wires visible

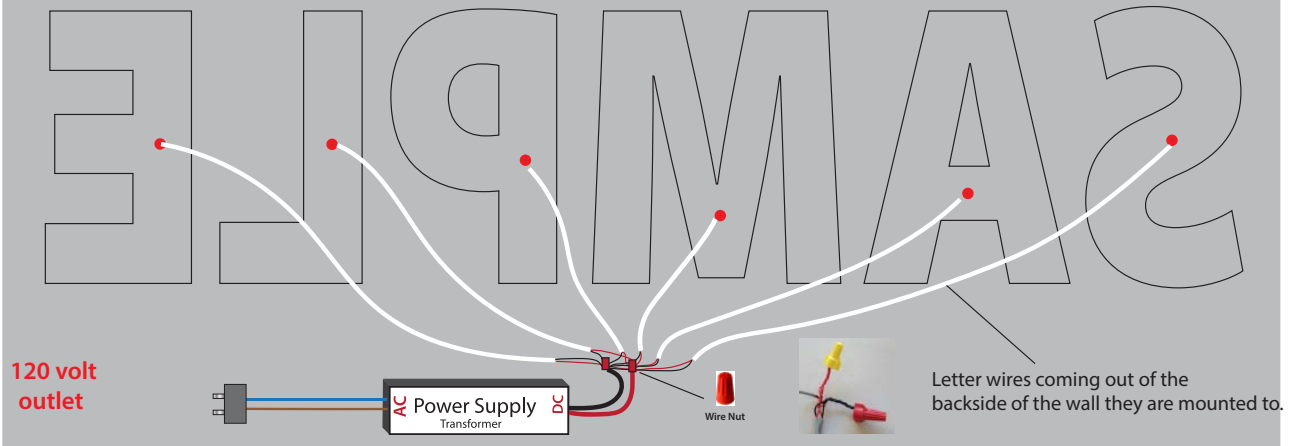


## THAT'S IT!

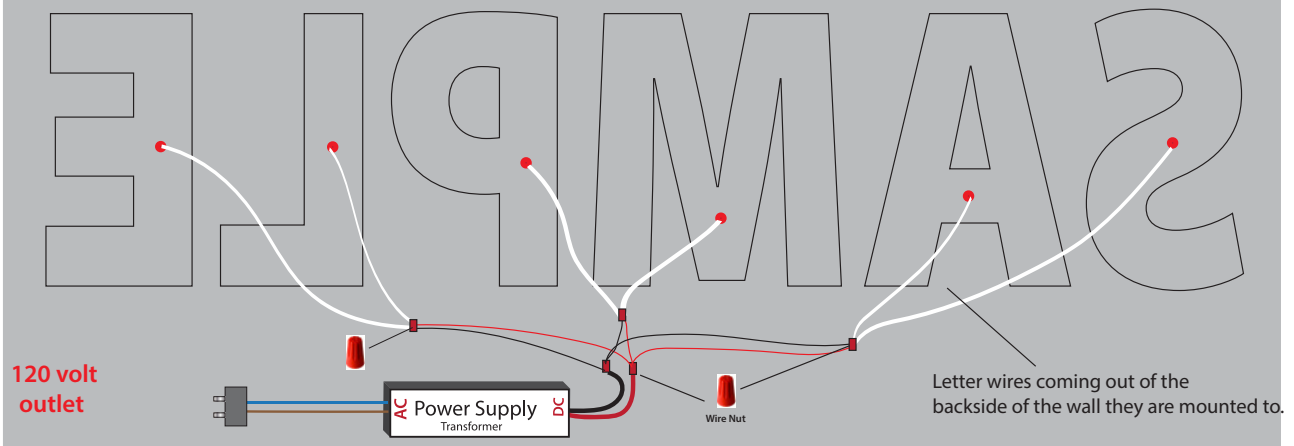
Now take a step back and enjoy you sign.

Do a happy dance, give yourself a pat on the back, pop champagne! Whatever it is - you deserve it!

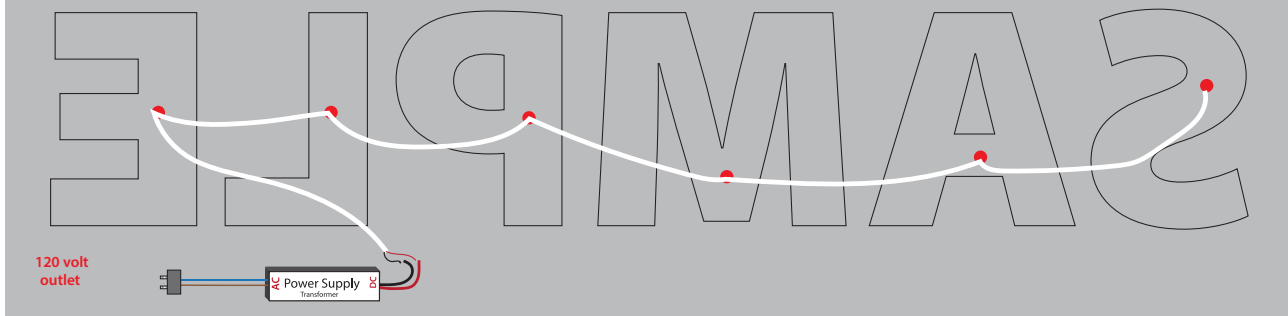
### Ideal wiring of letters.



### This method works fine as well, 2 - 3 letters pig tailed, and then grouped into the Power Supply.



### This method is not ideal, we feel it puts too much strain on the power supply.



**We would love to see pictures of your sign.**

Use the QR Code or email below to send us some.

**If you have any questions please contact us**

**816 - 800 - 9444**

**info@lettersandsigns.com**